

## **IWO**furn Monthly Report

### **Companies now available via IWO**furn with immediate effect – new users

The following companies have been available to users of the platform for connection since last month:

- **Fetim b.v.**  
1047 BP Amsterdam – Netherlands
- 

### **Message types implemented by IWO**furn users and connected companies

The following companies extended their message portfolio via IWO

furn last month and are available for connection via the platform:

- **Möbelhaus Käthe MEYERHOFF GmbH**  
Orders (ORDERS)  
Order confirmation (ORDRSP)





## Headlines April 2013

02.04.2013

### **Fetim Group registers on IWOfurn**

*The international trading company Fetim b.v. in Amsterdam becomes an IWOfurn Orange Member and uses the added value of the IWOfurn Society for EDI message exchange via the IWOfurn platform with its customers and the customers of the shelving manufacturer Pekodom which has been taken over by Fetim*

03.04.2013

### **VME + IWOfurn + DIVA = three strong partners**

*With the introduction of the digital sales assistant (DIVA) from Crystal Design, the furniture and furnishings partner ring has also intensified the long-standing cooperation with IWOfurn. Only the cooperation with IWOfurn makes the optimum incorporation of DIVA into the IT world of the trading world possible and the EDI circle is closed .*

04.04.2013

### **Ewald Schillig tests IDM catalogues from DIVA with IWOfurn**

*The upholstered furniture company Ewald Schillig GmbH & Co.KG is currently using the IWOfurn platform to review the completeness and practicality of its catalogues for seating furniture which have been exported from DIVA (Crystal Design) in IDM format. First test catalogues have already been placed on IWOfurn and are currently being tested for provision to the trade.*

05.04.2013

### **IWOfurn Combox – the secure alternative more than 100 times**

*For the exchange of electronic invoices in particular, the IWOfurn Combox is viewed to be the secure alternative to forwarding via email or FTP and its use is on the increase.*

12.04.2013

### **Successful IWOfurn Cogito workshop at Käthe Meyerhoff**

*Another EMV member in the form of Möbelhaus Käthe MEYERHOFF has recognised the opportunities presented by automated order handling via the IWOfurn platform. Orders and order confirmations were converted from manual to electronic exchange with the first 10 suppliers during the one-day workshop together with representatives of the merchandise management system Cogito.*

15.04.2013

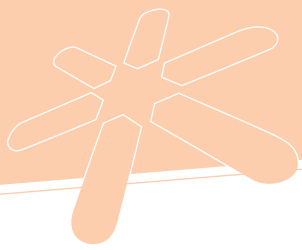
### **Further manufacturers use IWOfurn for electronic invoice exchange with Euretco and Intres**

*The possibility of electronic invoicing for manufacturers to Euretco and Intres via their service provider RetailPay implemented by IWOfurn is being used increasingly by manufacturers registered with IWOfurn.*

16.04.2013

### **Wohn Schick uses the IWOfurn Combox**

*Alongside many others, Wohn Schick also uses the secure alternative to forwarding by email or FTP.*



17.04.2013

### **IWOfurn at the Moeve meeting in Baienfurt**

*IWOfurn will be represented at the Moeve meeting staged by Ametras ITEC GmbH on 23 and 24 April with the topics of EDI, integration at the POS, integration of planning programs, KPS, DIVA and Furnplan.*

18.04.2013

### **IWOfurn B2B shop – now also in Italian and Spanish**

*In addition to German and English, manufacturers can now present their IWOfurn B2B shop to their retailers in Italian and Spanish.*

22.04.2013

### **Ametras – IWOfurn-certified partner**

*As partner to the SMEs, Ametras ITEC GmbH is one of the leading software service providers to the furniture industry. The IWOfurn integration of the merchandise management system MOEVE has been successfully implemented with some of the most important customers.*

*The MOEVE users of AMETRAS ITEC GMBH have been using the IWOfurn services for EDI communication with the suppliers for orders, order confirmations and invoices for years and the networking numbers are constantly on the increase*

23.04.2013

### **IDM catalogues activated on IWOfurn**

*As part of the development centering on the topic of “IDM Polster”, IWOfurn has integrated a second catalogue format. Now all accessories and e-device manufacturers can place their IDM data on IWOfurn. The only condition is that the data must be available in the XML version. First manufacturers have provided data and released them for the trade.*

25.04.2013

### **My Supplierportal from Home24 is a hit**

*30% of the non-EDI-capable suppliers of Home24 are already receiving orders per web-EDI thanks to the supplier portal provided by IWOfurn and are returning the order confirmations using the same channel. Home24 benefits from the fully automated order handling.*